



Best  
Western.

BEST WESTERN CHIEFTAIN INN  
WENATCHEE | WASHINGTON





Best  
Western.

## OUR LOBBY

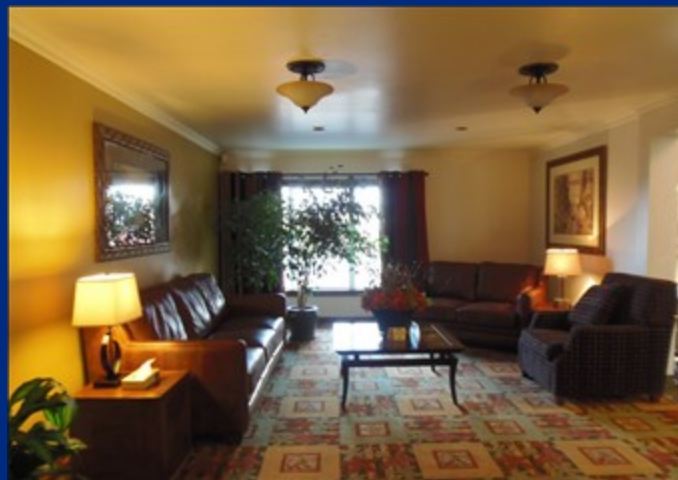
Best Western offers a welcoming experience from the moment you enter. At Best Western, you'll have the opportunity to relax and recharge amid clean comfortable surroundings. Our personal care ensures a restful stay with exceptional value for business and leisure travelers.



Our quiet and comfortable lobby next to our business center is the perfect place to meet friends, read a good book or just relax while deciding how to spend your day. At 6:PM daily, fresh baked chocolate chip cookies are available. We want you to consider the Best Western Chieftain Inn, your home away from home.











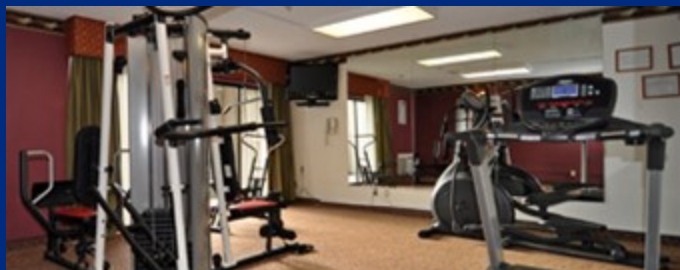
Best  
Western.

Our hotel meeting space located directly off the pool area is approx. 700 ft. and will comfortably hold 35 seated guests.

Guests may want to take advantage of our well-appointed fitness center.

## ACCOMMODATIONS

Each spacious guest room is equipped with cozy beds, new 37" flat screen HD TV with cable and HBO, mini-fridge, microwave, work desk with comfortable office chair, free high-speed Internet access, and local calling. Every room features its own enclosed patio or private balcony. All rooms have interior hallways. Fresh baked chocolate chip cookies every evening at 6pm. Pleasant dreams!



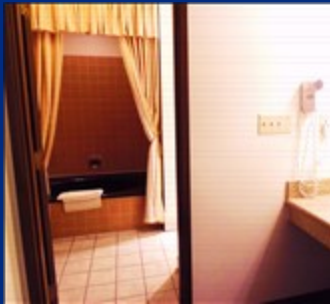
Our suites are surprisingly spacious and feature vaulted ceilings, new LG flat screen TVs, a large work desk with swivel chair, microwave and mini-fridge in wood cabinets, a large bar area, and either double closets or mirrored closets. Our suites are limited and are available on a first-come basis.



Best  
Western.

### BREAKFAST BUFFET

Wake up each morning to a delicious complimentary buffet breakfast consisting of waffles with buttery syrup, eggs and sausage links, yummy biscuits and gravy, yogurts, cereals, fresh fruit, juices and coffee.





## RECREATION

Feel like cooling off? Our heated seasonal pool provides a welcome relief from our warm summer weather, and the year-round hot tub is the perfect place to relax and unwind whether from a day of sightseeing or an afternoon on the slopes of Mission Ridge. Don't forget our 24-hour fitness center for staying in shape while on the road.





Wenatchee has approximately 300 days a year of beautiful sunshine, and that kind of weather provides an opportunity for many different kinds of activities, some of which are shown below. Some of our favorites are camping, rafting, boating, skiing, hiking, jet skiing, biking, rock climbing & golfing. If that's not enough, we LOVE our festivals!



## Best Western.

The Columbia Rives offers many small inlets abundant with water fowl for serene kayaking, or you may want to walk our beautiful and fully lighted Apple Loop Trail that winds its way along the river and through Wenatchee's many parks. Maybe a quiet spot along the river for a picnic is more to your liking.





## Best Western.

Are you someone who loves winter sports like skiing, snowboarding, cross country or snowmobiling? We've got just the ticket!

If you lean more toward boating, water-skiing, tubing, rafting and fishing, guess what?....We've got just the ticket!

With so many activities to choose from, deciding may be your only difficulty. From cross country skiing through beautifully groomed trails, a thrilling white water raft trip down the Wenatchee River, watching the glorious fireworks over the river on a warm summer night, or taking in a live performance at Wenatchee's Performing Arts Center, it's all good and it's all yours for the taking. Fun in Wenatchee is spelled F. U. N!









BW

## Best Western.

Enjoy the sweeping view from beautiful world famous Ohme Gardens with its stone pathways, tranquil pools and manicured gardens. Planning a wedding? It's the perfect place.

Below is a view of the Columbia River as it winds through acres of vineyards.





Best  
Western.



- Our convenient location is .5 miles from city center and the Wenatchee Convention Center.
- Within walking distance of Walla Walla Point Park, the Columbia River boat launch and the many events at the Town Toyota Center.
- When flying into Wenatchee, book with us and we'll provide you with complimentary shuttle service to and from the airport.
- Go on a wine tasting tour of the many surrounding wineries in the valley.
- Take a leisurely scenic drive along the Columbia River to nearby Lake Chelan.
- Tour the famous "Aplets & Cotlets" facilities in nearby Cashmere.
- Shop our unique downtown area for bargains and antiques.
- Take a tour of Rocky Reach and Rock Island Dam.
- Fish our bountiful lakes, rivers and streams.
- Ski Mission Ridge and/or snowmobile the byways.

Situated in a fertile valley in Central Washington at the confluence of the Wenatchee and Columbia rivers, Wenatchee is the 2nd most populous city in the central part of the state and serves as the Chelan County seat. To the south and west, mountains provide a dramatic backdrop for the city. We're only 20 minutes to Mission Ridge!



## DOWNTOWN

Shopping for antiques in downtown Wenatchee is a must, as is a visit to the Owl Soda Fountain and Gift Shop. Duck in out of the heat and order up an old-fashioned ice-cold velvety milkshake, or how about a tasty hot fudge sundae. The original Owl was built in the 1930s has been replicated to perfection.







## BEST WESTERN Chieftain Inn WENATCHEE | WASHINGTON

1017 North Wenatchee Avenue  
Wenatchee, WA 98801-1574 USA  
<http://www.bestwestern.com/chieftaininn>

Phone: 509-665-8585  
Fax: 509-665-9745  
Toll Free: 877-203-8585

Each Best Western® branded hotel is independently owned and operated. Best Western and the Best Western marks are service marks or registered service marks of Best Western International, Inc.  
©2010 Best Western International, Inc. all rights reserved.